

East Alameda County Regional Conservation Strategy: A Blueprint for Action



Users Advisory Group

December 11, 2008

Meeting Objectives

- Debrief October 16th UAG tour
- Review Phase 1 work products
- Discuss draft habitat models
- Discuss document outline
- EBRPD & PLCS mitigation presentations







Questions about
accomplishments so far...

Phase 1

- Focal species selection criteria
- Focal species list
- Public open space classification criteria
- Public open space map
- Land use classification and map
- Land cover mapping process
- Land cover map

Habitat Modeling



Focal Species Habitat Modeling

- Models give a better indication of where species could occur based on habitat characteristics
- Will highlight areas where mitigation could occur for given species
- Determine when species surveys are needed
- Gives context to the regulatory agencies when they are reviewing a project



Focal Species Habitat Modeling

Use known life history information and available biotic and abiotic information to help determine potential distribution:

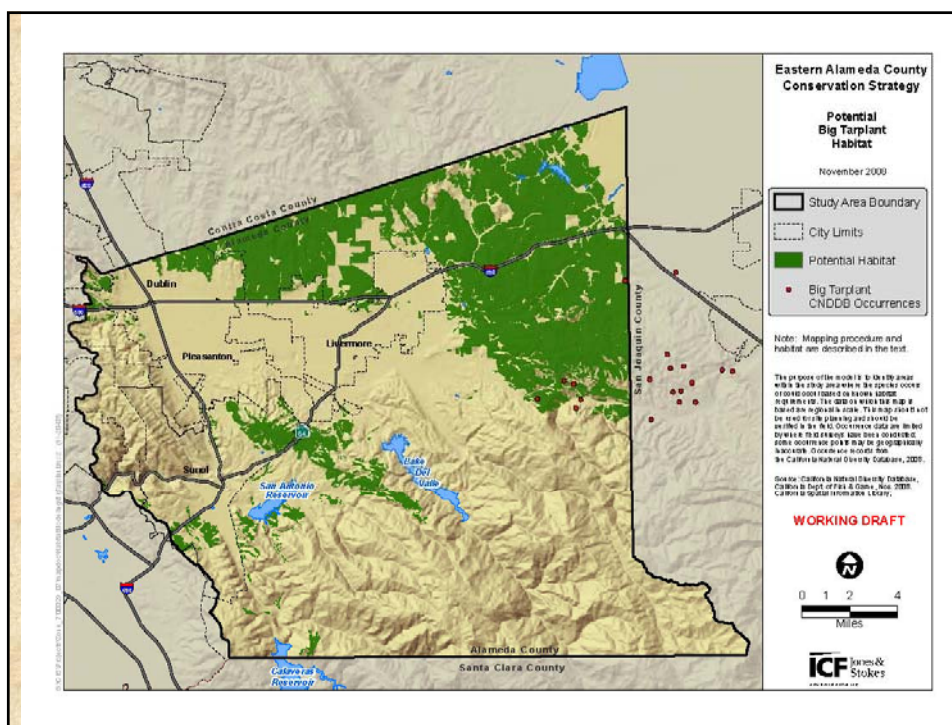
- Land-cover types
- Soils
- Elevation or slope characteristics
- Known dispersal or movement distances for wildlife
- Specific habitat features (e.g., aquatic habitat)
- Any other life history requirements that can be replicated in GIS
- Use known occurrences to check potential distribution for accuracy.

Blepharizonia plumosa

Big tarplant

Habitat parameters

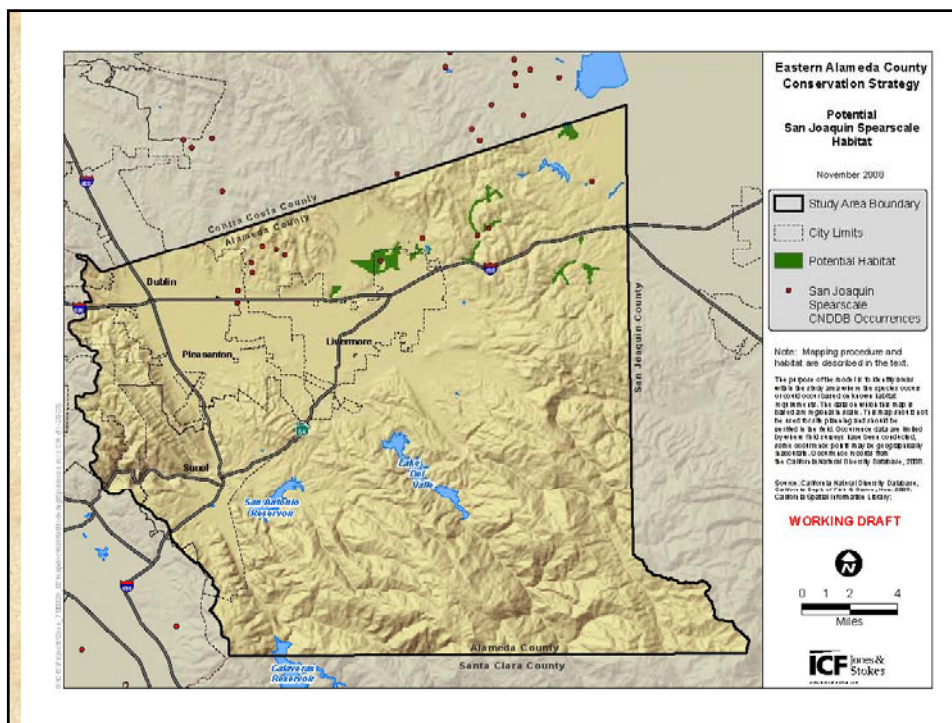
All California annual grassland up to 3609 feet on clay or clay loam soils.



Atriplex joaquiniana – San Joaquin spearscale

Habitat parameters

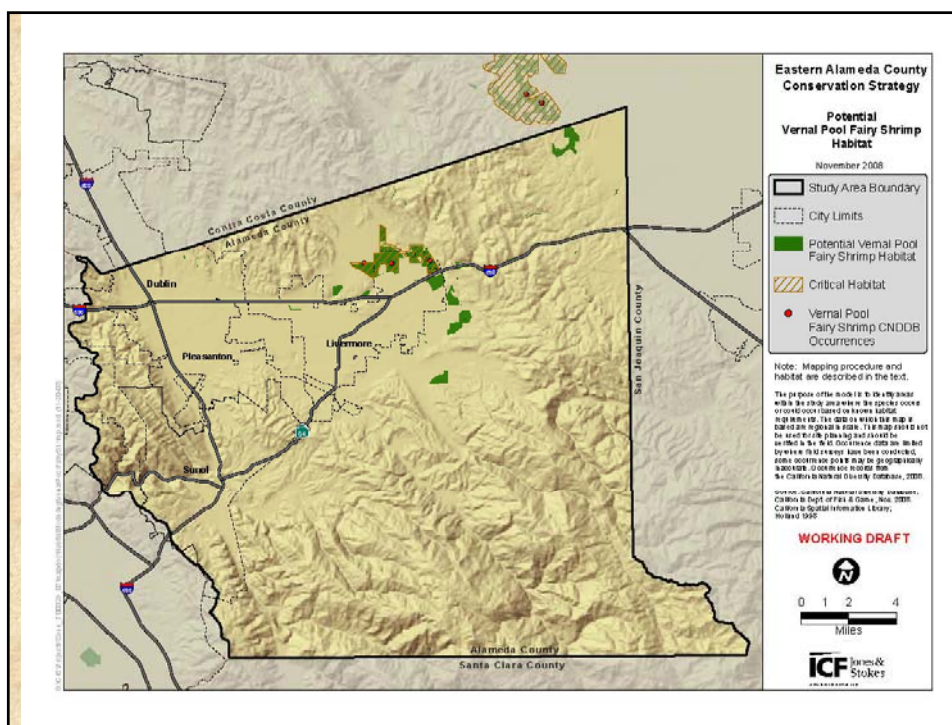
All alkali meadow and scalds, alkali wetland, valley sink scrub between 0-1055 feet.



Vernal pool fairy shrimp

Habitat parameters

All seasonal wetlands and vernal pools noted by Holland 1996.



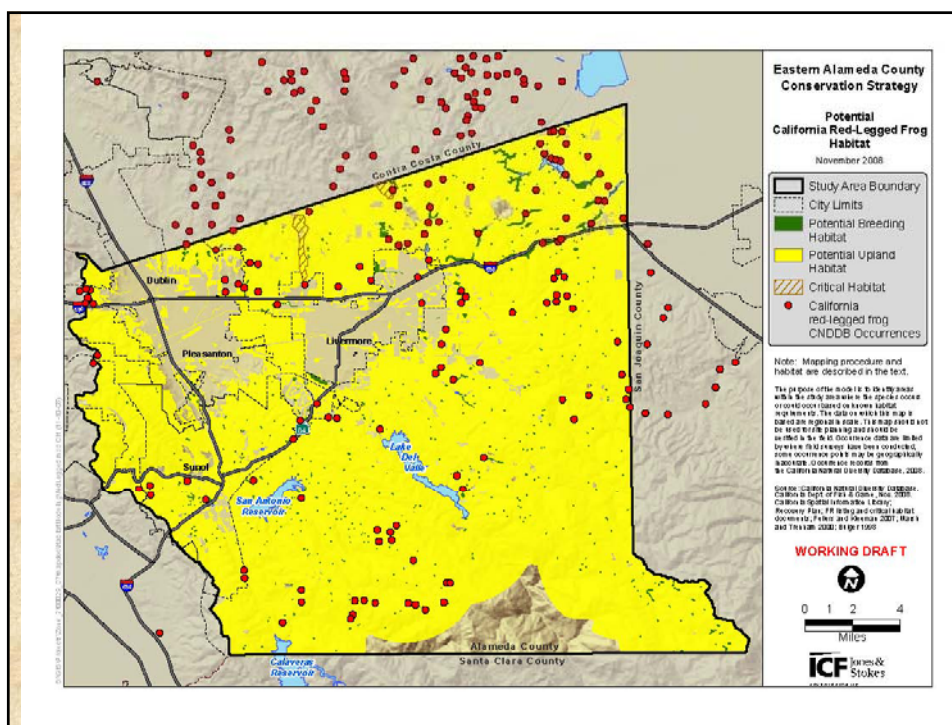
California red-legged frog

Breeding Habitat

Perennial freshwater marsh, seasonal wetland, alkali wetland, pond (including stock ponds), streams, + 150' buffer from those features.

Upland Habitat – movement

Two-mile buffer around breeding habitat in all land cover types except for: urban, rural residential, landfill, aqueduct.



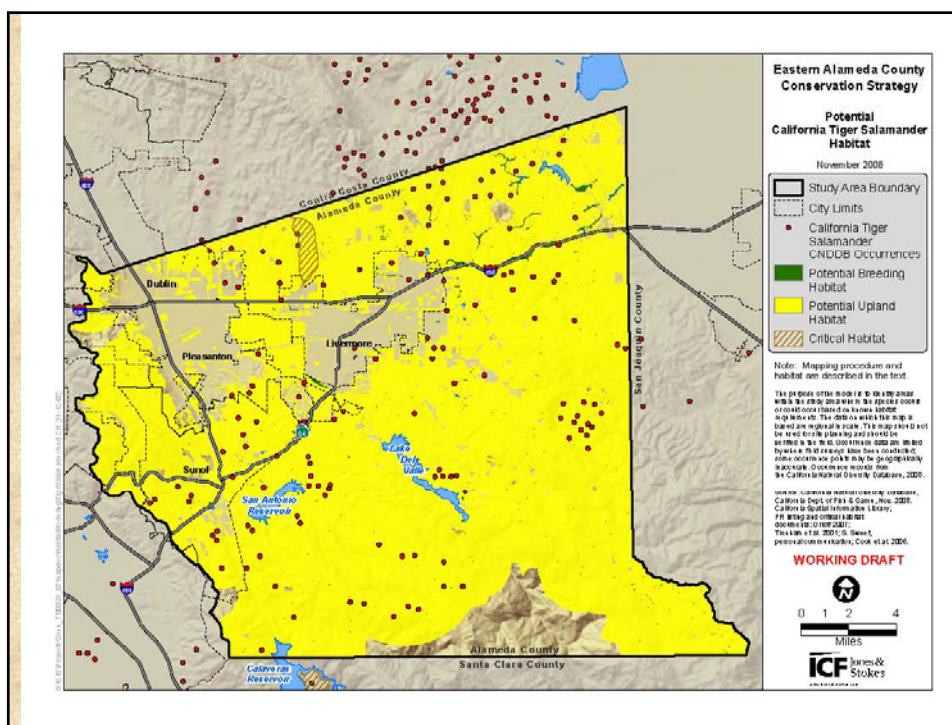
California tiger salamander

Breeding Habitat

Perennial freshwater marsh, seasonal wetland, alkali wetland, ponds (including stock ponds) between 0-4,500 ft.

Upland Habitat – movement & non-breeding

1.6-mile buffer around breeding habitat in all land cover types except for: urban, rural residential, landfill, aqueduct.



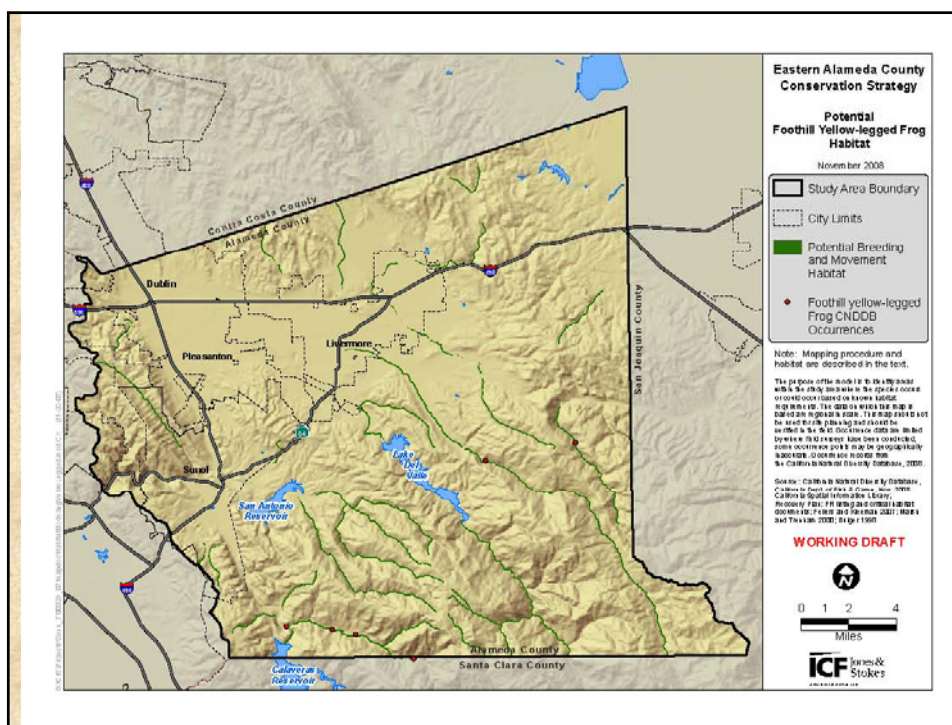
Foothill yellow-legged frog

Breeding and Foraging Habitat – year round

All perennial rivers and streams in all land cover types except urban, rural residential, landfill.

Upland Habitat – movement & refuge

Buffer all breeding habitat by 165ft.



Alameda whipsnake

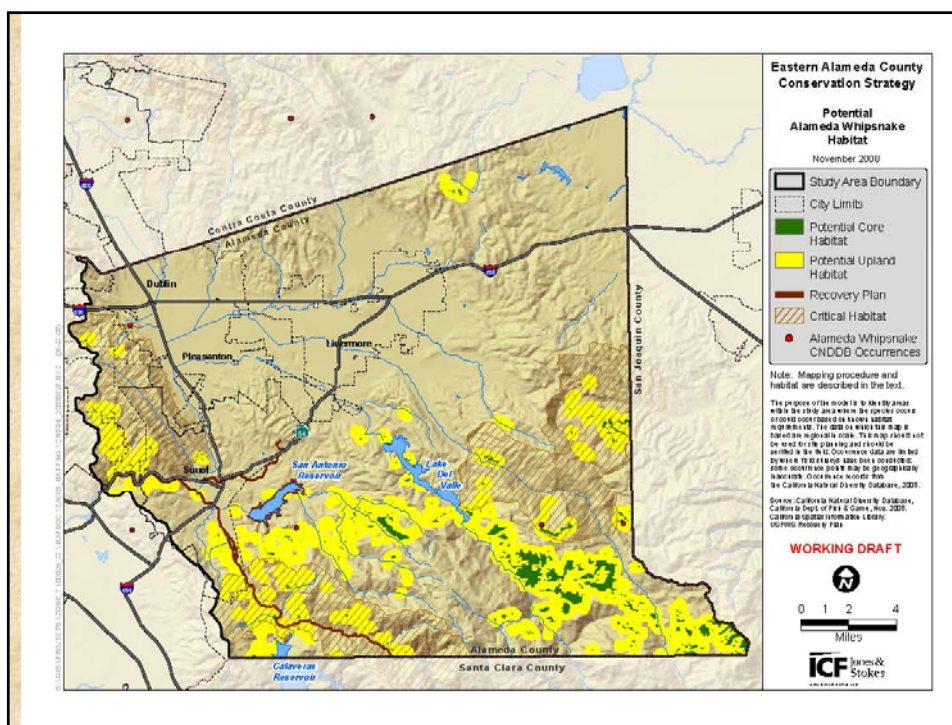
Core Habitat – breeding and foraging

Rock outcrop, Northern Mixed Chaparral/Chamise
Chaparral, Mixed serpentine chaparral, northern coastal
scrub/Diablan sage scrub.

Movement/Dispersal Habitat

All grassland, oak woodland, riparian forest & scrub land
cover types within 300 meters (984 feet) of core habitat.

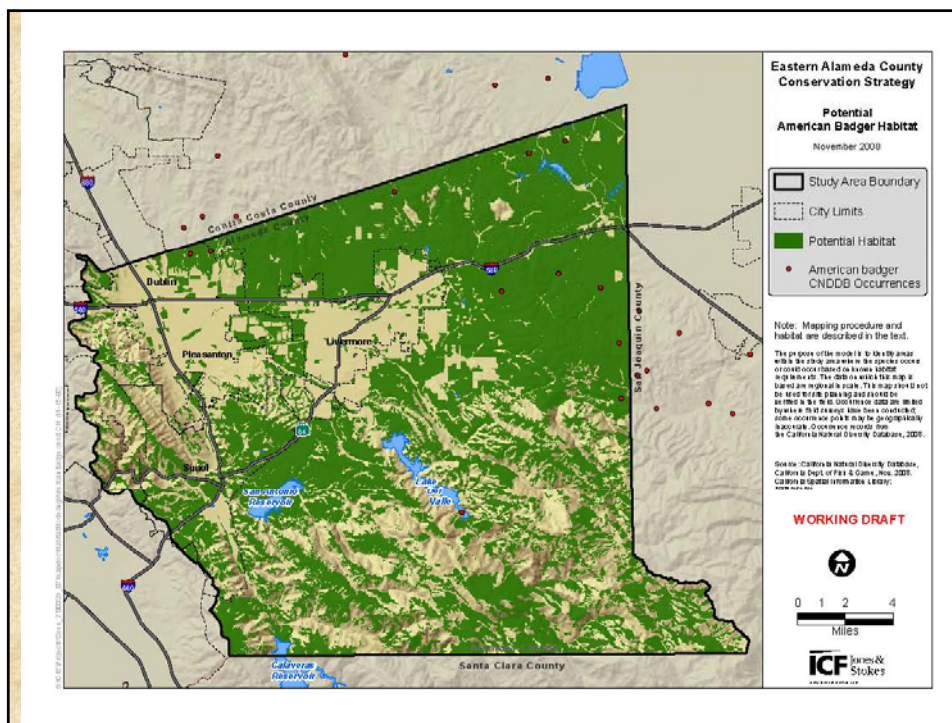
All of Alameda and Vallecitos Creeks; esp. Alameda Creek
where it crosses under I-680; and Vallecitos Creek linking
Pleasanton Ridge and San Antonio Reservoir +300 m
buffer (discussed in the Recovery Plan).



American Badger

Denning/Movement Habitat

California annual grassland, serpentine bunchgrass grassland, alkali meadow and scalds, valley oak woodland, developed agriculture, cropland, ruderal, rural residential.







Questions?



Draft Document Outline

- Chapter 1 – Introduction
- Chapter 2 – Environmental Setting
- Chapter 3 – Conservation Strategy
- Chapter 4 – Implementation
- Chapter 5 – Literature Cited

Contacts:

- Weblink:
www.fws.gov/sacramento/eaccs/eaccs.htm
- Mary Lim, EACCS Coordinator
mlim@zone7water.com
925-454-5036
- Troy Rahmig, ICF Jones and Stokes
trahmig@jsanet.com
408-434-2244