

East Alameda County Regional Conservation Strategy: A Blueprint for Action



Users Advisory Group

January 15, 2009



Outline

- Mitigation Need
- Project updates
 - Funding
 - New Website
 - Conservation Gap Analysis
 - Glossary
- Project Schedule in 2009
- Comment Process for Future Document Review



Mitigation Need

- The strategy is not tied to or based on particular projects.
- No impact analysis will be completed (that will be done at the project level), however the strategy will provide important context for that analysis.
- The types of projects that could occur in the future are defined in public planning documents (general plans, capital improvement programs) – available online.



Scope of Conservation Strategy

- The scope and size of conservation is defined by the study area and on a resource-by-resource basis, and is not project related.
- The strategy will be a tool for conservation efforts throughout the study area regardless of whether those efforts are mitigation related.



Conservation Dollars

- An accepted regional conservation strategy will likely attract funds from outside sources.
- Will give some context to conservation projects on private lands that are seeking federal conservation dollars.
- Could result in a funding source for research on data gaps for species or communities.



The Reason

- Only two mitigation banks in the county
- Federal and state wildlife agencies urge a *regional approach* to simplify and improve the permit process
- A need for a coordinated strategy for conservation organizations in the county



Project update

■ Funding Update

- State Budget Woes
- EACCS project budget
- Changes in project plan

■ New Website

■ Conservation Gap Analysis

- Natural community figures
- Preliminary pond density analysis

■ Glossary of conservation terms



Project update

■ Funding Update

- State Budget Woes
- EACCS project budget
- Changes in project plan

■ New Website

■ Conservation Gap Analysis

- Natural community figures
- Preliminary pond density analysis

■ Glossary of conservation terms



Project update

■ Funding Update

- State Budget Woes
- EACCS project budget
- Changes in project plan

■ **New Website**

■ Conservation Gap Analysis

- Natural community figures
- Preliminary pond density analysis

■ Glossary of conservation terms



EAST ALAMEDA COUNTY CONSERVATION STRATEGY

[About EACCS](#)

[Partners](#)

[Working Groups](#)

[Public Participation](#)

[FAQs](#)

[Related Links](#)

[Contact Us](#)

What is the East Alameda County Conservation Strategy?

To address conflicts between development, growth and infrastructure maintenance activities and the continued survival of endangered or threatened species, the agencies shown below are preparing the East Alameda County Conservation Strategy.

The EACCS will . . .

- provide a blueprint for conservation in East Alameda County
- streamline the environmental permitting process by providing guidance to project proponents on where and how to focus mitigation efforts to address potential adverse effects on focal species due to future development and infrastructure improvements
- facilitate ongoing conservation programs by providing a coordinated approach supported by local stakeholders and regulatory agencies

For More Information

To request more information about the EACCS, please contact:

Mary Lim

Zone 7 Water Agency

Phone: (925) 454-5036

Email: mlim@zone7water.com



Conservation gap analysis

■ Funding Update

- State Budget Woes
- EACCS project budget
- Changes in project plan

■ New Website

■ **Conservation Gap Analysis**

- **Natural community figures**
- **Preliminary pond density analysis**

■ Glossary of conservation terms

East Alameda County Conservation Strategy Preliminary Land Cover Mapping

January 13, 2009

WORKING DRAFT

Land Cover

Grasslands

- California Annual Grassland
- Serpentine Bunchgrass Grassland
- Alkali Meadow and Scalds
- Rock Outcrop

Chaparral & Coastal Scrub

- Northern Mixed Chaparral / Chamise Chaparral
- Mixed Serpentine Chaparral
- Northern Coastal Scrub / Diablan Sage Scrub

Oak Woodland

- Blue Oak Woodland
- Coast Live Oak Forest and Woodland
- Foothill Pine-Oak Woodland

Riparian Forest & Scrub

- Mixed Willow Riparian Scrub
- Sycamore Alluvial Woodland
- Mixed Riparian Forest and Woodland

Conifer Woodland

- Mixed Evergreen Forest / Oak Woodland
- Coulter Pine Woodland
- Sargent Cypress Woodland

Wetland

- Perennial Freshwater Marsh
- Seasonal Wetland
- Alkali Wetland

Open Water

- Pond
- Quarry Pond
- Reservoir
- Riverine (unvegetated)
- Canal / Aqueduct

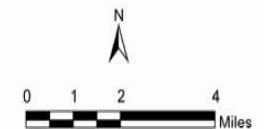
Agricultural

- Developed Agriculture
- Cropland
- Vineyard
- Orchard
- Ornamental Woodland

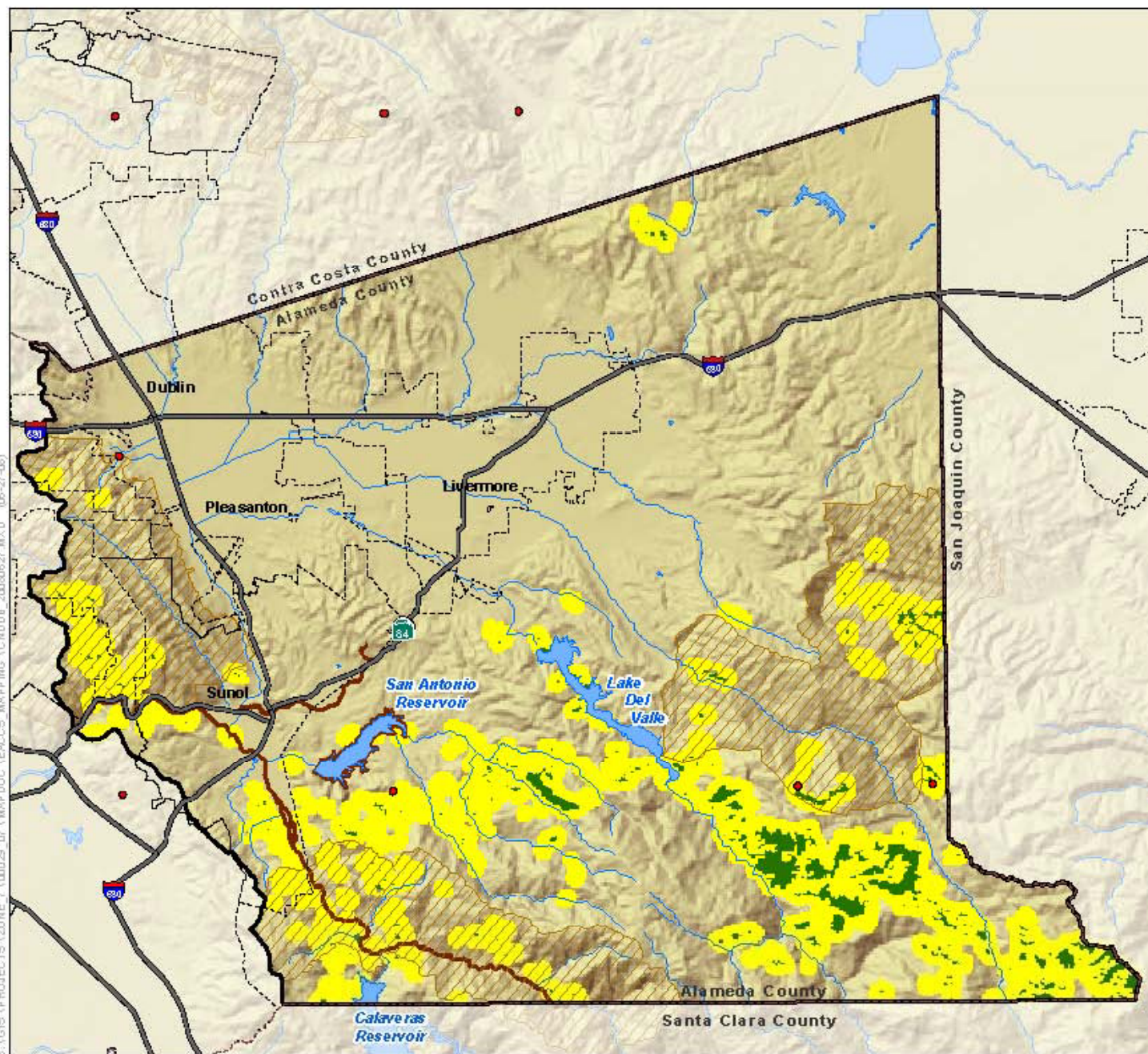
Developed

- Ruderal
- Urban - Suburban
- Rural - Residential (<1 unit per 2.5 Acres)
- Landfill
- Golf Courses / Urban Parks

Study Area Alameda County Line Highway



ICF Jones & Stokes
an ICF International Company



Eastern Alameda County Conservation Strategy

Potential Alameda Whipsnake Habitat

November 2008

- Study Area Boundary
- City Limits
- Potential Core Habitat
- Potential Upland Habitat
- Recovery Plan
- Critical Habitat
- Alameda Whipsnake CNDOB Occurrences

Note: Mapping procedure and habitat are described in the text.

The purpose of the model is to identify areas within the study area where the species occurs or could occur based on known habitat requirements. The data on which this map is based are regional in scale. This map should not be used for site planning and should be verified in the field. Occurrence data are limited by where field surveys have been conducted; some occurrence points may be geographically inappropriate. Occurrence records from the California Natural Diversity Database, 2008.

Source: California Natural Diversity Database, California Dept. of Fish & Game, Nov. 2008; California Spatial Information Library; USFWS Recovery Plan


WORKING DRAFT

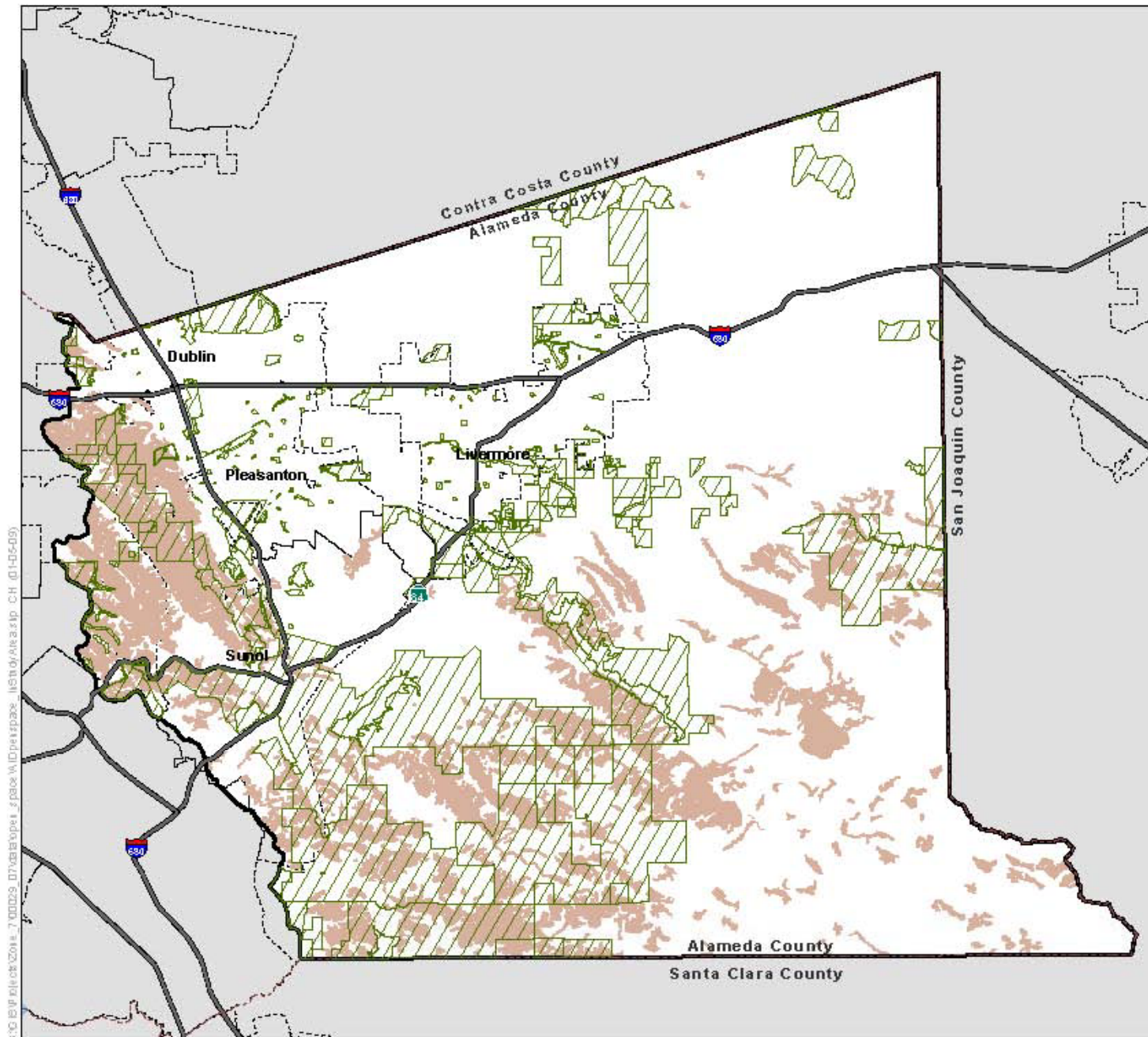


0 1 2 4
Miles

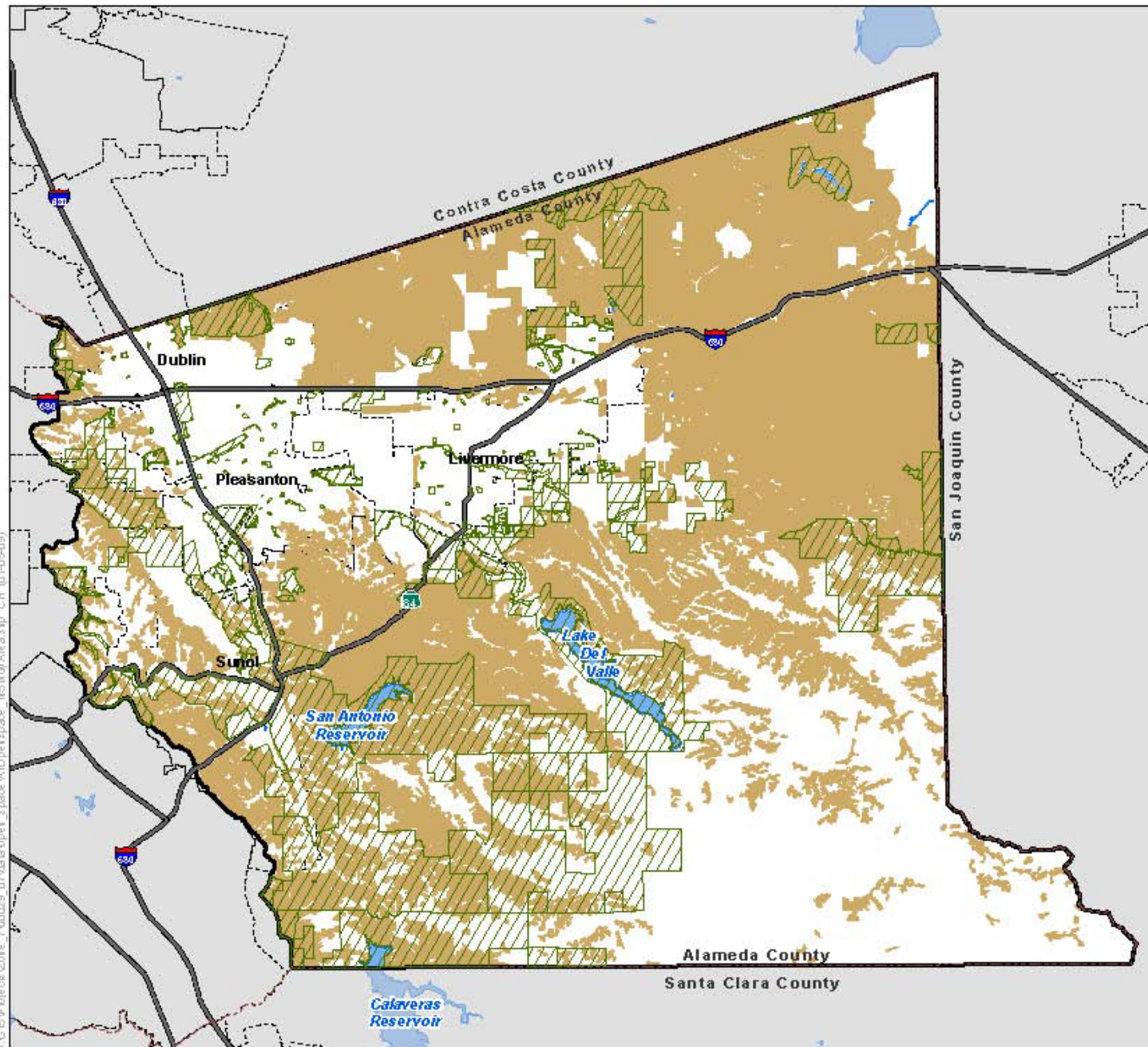
ICF Jones & Stokes
a black and white company

Conifer Woodland Land Cover

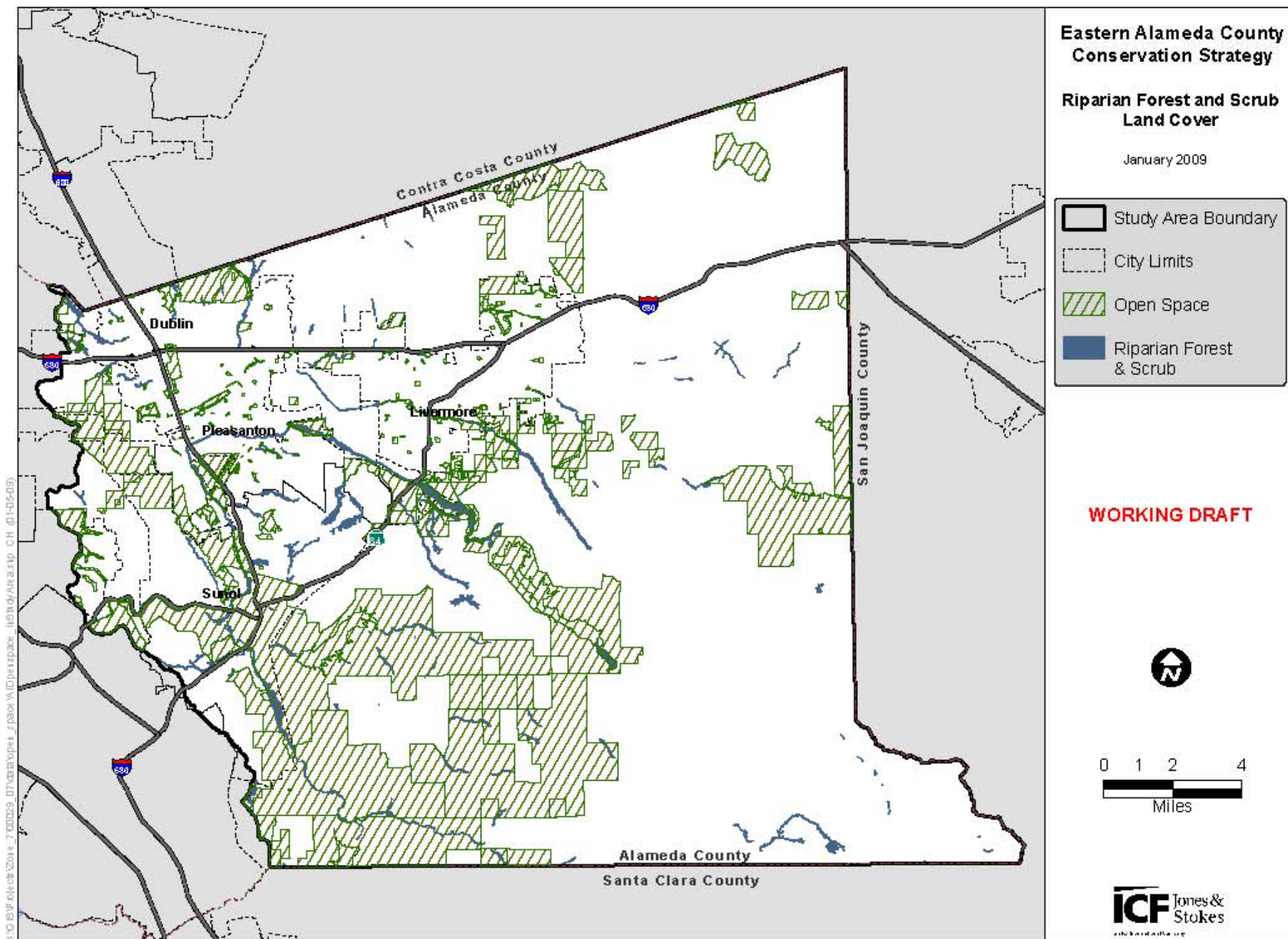
 Study Area Boundary
 City Limits
 Open Space
 Conifer Woodland



ICF Jones & Stokes
a harsco company



C:\Program Files\Microsoft Office\Office12\Word\Word.exe



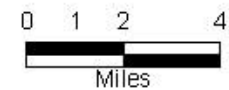
Eastern Alameda County Conservation Strategy

Wetland Land Cover

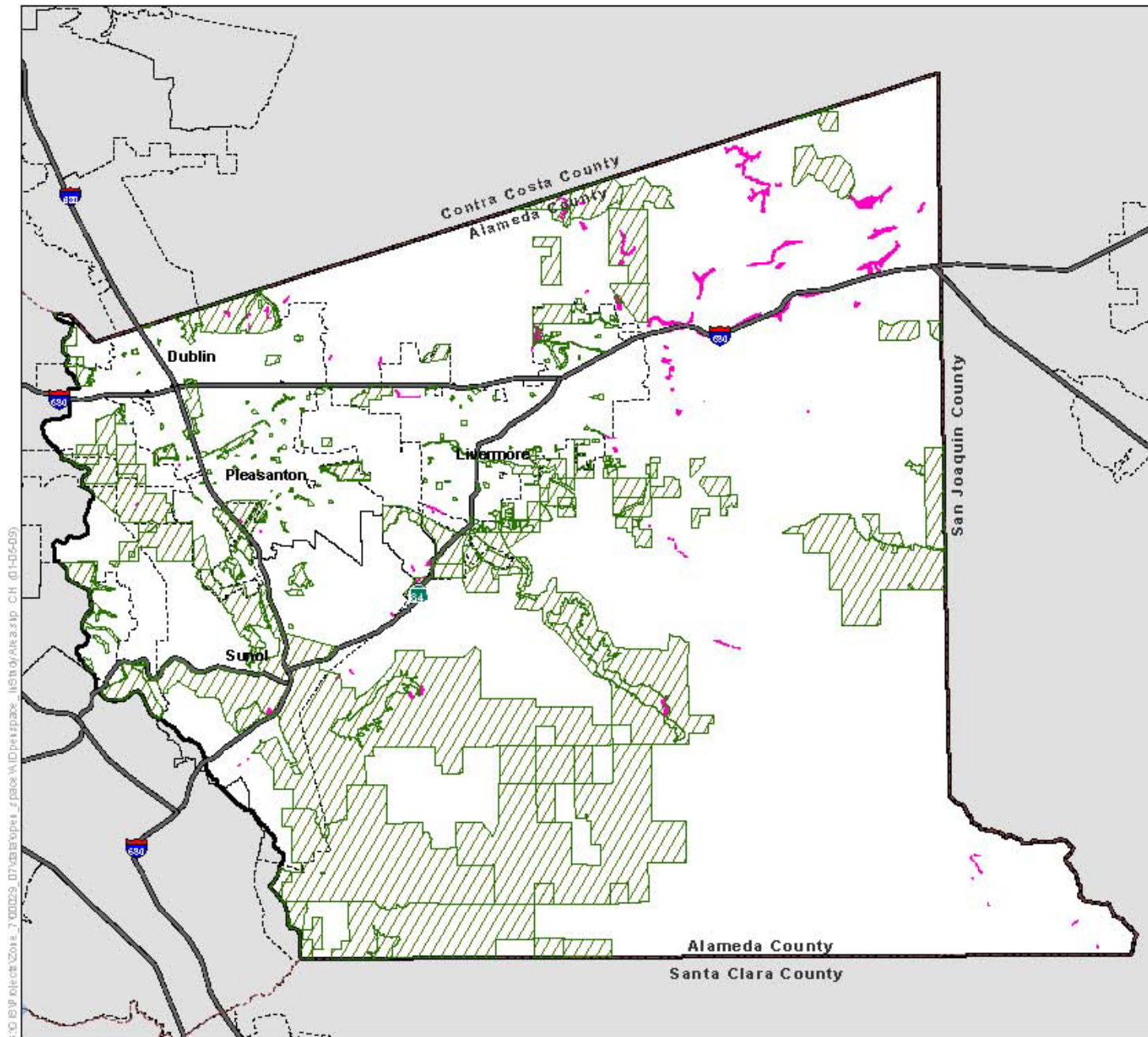
January 2009



WORKING DRAFT



ICF Jones & Stokes
a hickok & co. inc.



S:\019\elect\Zona_7\0029_07\map\open\space_1\study\area\map.CH 01-05-09



Pond density

- Over 600 ponds in the study area.
- Ponds support several focal species.
- Proximity of ponds to one another is an important landscape feature that needs to be evaluated when writing a conservation strategy for pond species.
- Pond density calculated using ponds per square mile.



Conservation gap analysis

■ Funding Update

- State Budget Woes
- EACCS project budget
- Changes in project plan

■ New Website

■ Conservation Gap Analysis

- Natural community figures
- Preliminary pond density analysis

■ **Glossary of conservation terms**



2009 Project Schedule

[illegible]



Comment process

- Word file for grammatical comments (track changes)
- Excel spreadsheet for substantive comments (organization, missing information, content)
- Excel comments will be combined and sorted
- Comments by others can be made available if needed
- Comment due date: Set for each work product
- Comments will be addressed in next version of document



Communications Tools

- Weblink:

www.fws.gov/sacramento/eaccs/eaccs.htm

- EACCS Coordinator

Mary Lim

m_lim@zone7water.com

925-454-5036



Questions?